

Limit of Detection: 1CFU / L, *L. pneumophila* sg1 (when 100ml sample filtered). Filtration and test performance may be affected by suspended solids. Bacteria recovery post filtration can vary (<10-100%).

Organism	≥cfu/mL
L.p Sg-2,3,8,11,13,14	1x10E08
L.p. Sg-4,5,6,7,9,10,15	1x10E07
L.p. Sg-12	8X10E06
<i>S.aureus</i>	2X10E08

Test Operating Limits: Use on samples between 50-113°F (10-45°C). Evaluated on samples that filter in <5 minutes. Do not use on systems treated with biguanide based or THPS biocides.

Specificity: Non-reactive with wide range of environmental bacteria. Weak cross reactions with other *L. pneumophila* sg's and *S. aureus* at high concentrations.

Storage: Store at room temperature 64-68°F (18-22°C). Do not freeze. Do not use after expiration date. Do not use if test wrapper is perforated.

Disclaimer: Sustainable Water Solutions LLC makes no warranties or representations regarding performance of the products, or that the products are merchantable or fit for a particular purpose. Sustainable Water Solutions LLC expressly disclaims all other warranties and representations, express or implied, or which arise by operation of law or otherwise.



*Accurate, Immediate Testing
for Legionella Bacteria in
Your Water.*

Filtered Water Multi-Test

This test is appropriate for screening of Humidifiers, Domestic Water Systems, Cooling Towers, Pools and Spas.

Please visit onsitelegionellatesting.com for an instructional video on how to take this test.

Call (925) 320-3555
for guidance or other questions.



onsitelegionellatesting.com
(925) 320-3555

Sustainable Water Solutions LLC
4464 Lone Tree Way #316
Antioch, CA 94531

Legionella Field Test: Filtered Water Test

A rapid test intended for the qualitative detection of *Legionella pneumophila* serogroup 1.

Overview

This test is used to detect the presence of *Legionella pneumophila* serogroup 1 bacteria in water samples from a wide range of sources. The test operates via a lateral flow immunochromatographic Assay (LFICA)

Contents:

- 1 - individual foil wrapped LFICA test strip
- 1 - hollow fibre filter
- 1 - syringe with recovery buffer
- 1 - sample collection beaker
- 1 - 60ml syringe (Luer Lock)
- 1 - Visual Score Card
- 1 - instructions

For optimum results the test should be performed at room temperature. The foil wrapping should NOT be opened until immediately prior to running the test.

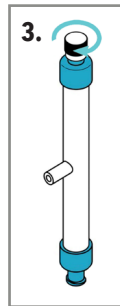
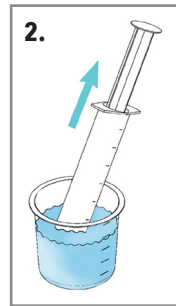
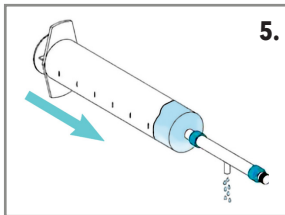
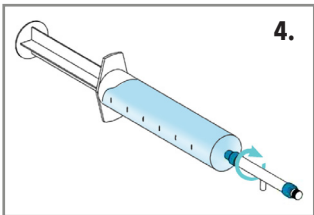


The product is intended as part of an overall water treatment, management and risk reduction approach and should NOT be used as the sole method for assessing risks associated with *Legionella* bacteria. This test is intended for the analysis of water samples only. It is NOT intended for diagnostic testing, in a clinical or medical situation, of legionnaires' disease in humans.

Caution: Avoid generating aerosols when collecting or handling samples.

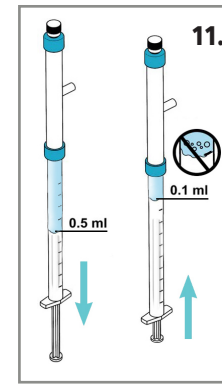
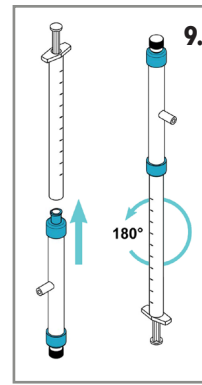
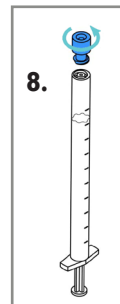
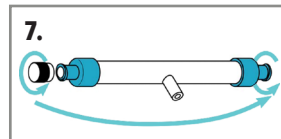
Take a sample

1. Collect 100ml of water from any water source using the beaker.
2. Draw 50 to 60ml of sample from your beaker into the 60ml syringe.
3. Tighten the end cap on the Hollow Fibre Filter.
4. Screw the opposite end onto the 60ml syringe.
5. Depress the plunger to pass the sample water through the filter and into a sink or wastewater outlet.



Recover any bacteria

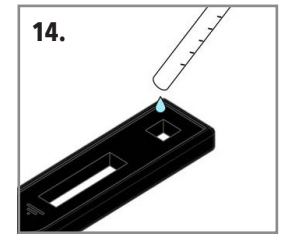
7. Remove the end cap from the filter and place it on to the opposite end of the filter.
8. Take the 1ml recovery buffer syringe from the kit. Remove the blue cap.



9. Keeping the filter upright, attach the 1ml syringe to the open end of the filter. Flip the filter and 1ml syringe 180°.
10. Pull the syringe back to the 1ml mark. Push the liquid all the way back into the filter. Repeat this step 2 more times.
11. Pull the syringe back to the 0.5 ML mark. Push the plunger in slowly to the 0.1ml mark to collect exactly 0.1ml of sample. *If there are any air bubbles in your sample, repeat the last step until there are no air bubbles in your 0.1ml sample.*
12. Detach the syringe from the filter, place the filter to one side.

Add sample to test strip

13. Take the test strip out of its foil packaging. Place the strip on a flat surface.
14. Gently add your 0.1ml of sample to the sample port on the test strip.
15. Start a timer for 25 minutes.
16. After 25 minutes (and before 30 minutes) read your test result.



Intrepreting the results

The test is composed of two lines; a test line (TL) and a control line (CL).

POSITIVE RESULT: If both lines are present, even if the test line is very faint, then *Legionella pneumophila* serogroup 1 has been detected above the detection limit of the test kit (>1 CFU / ML).



NEGATIVE RESULT: If no test line is present at the test line position but there is a control line, then the test is negative at a level above the detection limit of the test kit and *Legionella pneumophila* serogroup 1 has not been detected.



Invalid Test

Tests without a control line, or that look like any of these tests, are invalid.



The Visual Score Card

Use the Visual Score Card to read the Hazard Index by matching the intensity of the test line on the test strip with the intensity of the lines on the visual score card.

A Hazard Index score of 1 or greater is equal to or greater than 1 CFU / ML and a Hazard Index score of 6 or greater is equal to or greater than 10 CFU / ML.

